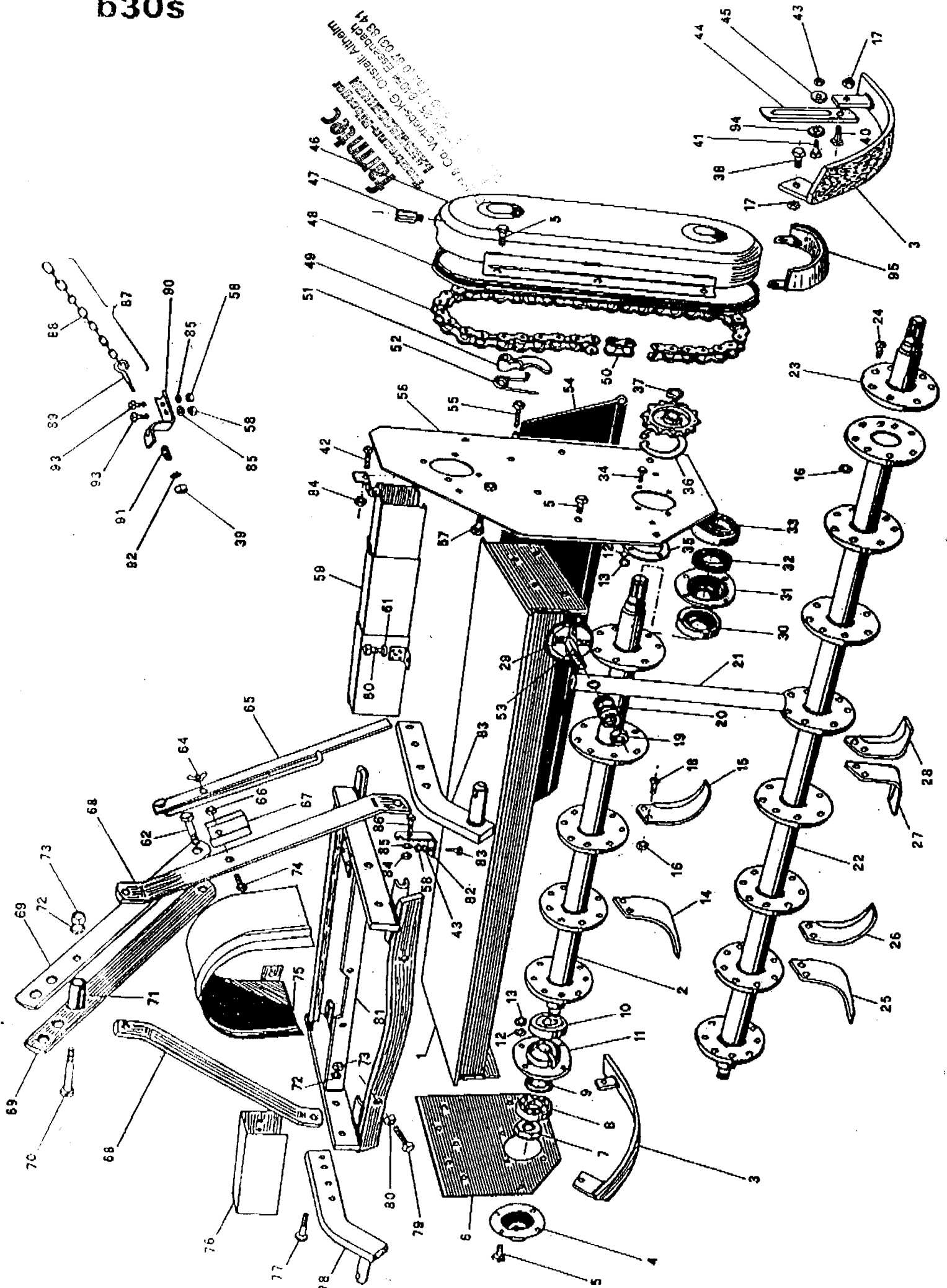


b30s



| REF. | CODE | DESCRIZIONE | DESCRIPTION |
|------|---------------------|-------------------------|---------------------------|
| 1 | 063 0001 | TELAIO CM. 85 | FRAME-MAIN WELDMENT 85 |
| | 073 0001 | TELAIO CM.105 | FRAME-MAIN WELDMENT 105 |
| | 083 0001 | TELAIO CM.125 | FRAME-MAIN WELDMENT 125 |
| | 093 0001 | TELAIO CM.145 | FRAME-MAIN WELDMENT 145 |
| | 103 0001 | TELAIO CM.165 | FRAME-MAIN WELDMENT 165 |
| 2 | 013 0081 | ROTORE CM. 85 | ROTOR CM. 85 |
| | 023 0081 | ROTORE CM.105 | ROTOR CM.105 |
| | 033 0081 | ROTORE CM.125 | ROTOR CM.125 |
| | 043 0081 | ROTORE CM.145 | ROTOR CM.145 |
| 3 | 003 0048 | SLITTA | SLIDE |
| 4 | 003 0091 | COPERCHIELLA EST. DX. | BEARING COVER RIGHT |
| 5 | 000 1241 | VITE 10 x 25 | BOLT 10 x 25 |
| 6 | 003 0015 | FIANCO DESTRO. | RIGHT SIDE PANEL |
| 7 | 003 0095 | GHIERA Ø 30 | NUT Ø30 |
| 8 | 003 0094 | CUSCINETTO 6306 | BEARING 6306 |
| 9 | 003 4098 | PARAOLIO 40.60.10 | SEAL-OIL 40.60.10 |
| 10 | 002 2074 | COPERCHIELLA PARAT. DX. | DIRT SHIELD RIGHT |
| 11 | 003 0000 | COPERCHIELLA INTERNA | BEARING COVER INNER |
| 12 | 000 1011 | GROWER Ø 10 | WASHER Ø 10 |
| 13 | 000 1010 | DADO Ø 10 | NUT Ø 10 |
| 14 | 003 0104 | ZAPPETTA DX. ELICA | C-KNIFE-RIGHT |
| 15 | 003 0104 | ZAPPETTA SX. ELICA | C-KNIFE-LEFT |
| 16 | 002 1105 | DADO Ø 12 | NUT Ø 12 |
| 17 | 003 0064 | DADO Ø 12 | NUT Ø 12 |
| 18 | 000 1073 | VITE 12 x 35 | BOLT 12 x 35 |
| 19 | 003 0358 | DADO Ø 14 | NUT-SELF LOCKING Ø 14 |
| 20 | 000 1176 | MOLLA | SPRING |
| 21 | 003 0348 | PIEDINO DI APPOGGIO | STAND |
| 22 | 003 0421 | ROTORE CM. 165 | ROTOR CM. 165 |
| 23 | 003 0426 | PERNO SX. ROTORE | FLANGED PIVOT LEFT |
| 24 | 000 7087 | VITE 12 x 45 | BOLT 12 x 45 |
| 25 | 000 1071 | ZAPPETTA DX. RINFORZ. | C-KNIFE-RIGHT REINF. |
| 26 | 000 1071 | ZAPPETTA SX. RINFORZ. | C-KNIFE-LEFT REINF. |
| 27 | 000 7288 | ZAPPETTA DX. SQUADRA | L-KNIFE-RIGHT |
| 28 | 000 7288 | ZAPPETTA SX. SQUADRA | L-KNIFE-LEFT |
| 29 | 002 1004 | ATTACCO PER PIEDINO | STAND-HITCH |
| 30 | 003 0084 | COPERCHIELLA PARAT.SX. | DIRT SHIELD LEFT |
| 31 | 003 0121 | SUPPORTO SX. ROTORE | FLANGE-LOWER LEFT |
| 32 | 000 3306 | PARAOLIO 45.80.10 | SEAL-OIL 45.80.10 |
| 33 | 000 1148 | CUSCINETTO 6308 | BEARING 6308 |
| 34 | 000 1008 | VITE 10 x 30 | BOLT 10 x 30 |
| 35 | 003 0138 | GUARNIZIONE | GASKET |
| 36 | 000 8137 | SEEGER Ø 90 INTERNO | SNAP RING Ø 90 INT. |
| 37 | 000 8138 | SEEGER Ø 40 ESTERNO | SNAP RING Ø 40 EXT. |
| 38 | 001 5255 | VITE 12 x 30 | BOLT 12 x 30 |
| 39 | 001 3345 | DADO Ø 12 AUTOBLOC. | NUT-SELF LOCKING Ø 12 |
| 40 | 000 1043 | VITE 12 x 35 | BOLT 12 x 35 |
| 41 | 003 0054 | VITE 12 x 50 | BOLT 12 x 50 |
| 42 | 000 1101 | VITE 10 x 45 | BOLT 10 x 45 |
| 43 | 000 3038 | DADO Ø 12 | NUT Ø 12 |
| 44 | 003 0051 | REGISTRO SLITTA | SERRATED ADJUSTMENT ARM |
| 45 | 003 0067 | RONDELLA FORATA | WASHER WITH HOLES |
| 46 | 003 0391 | COPERCHIO CARTER | HOUSING CHAIN & SPROCKETS |
| 47 | 000 1107 | SFIATATOIO CARTER | BREATHER CAP |

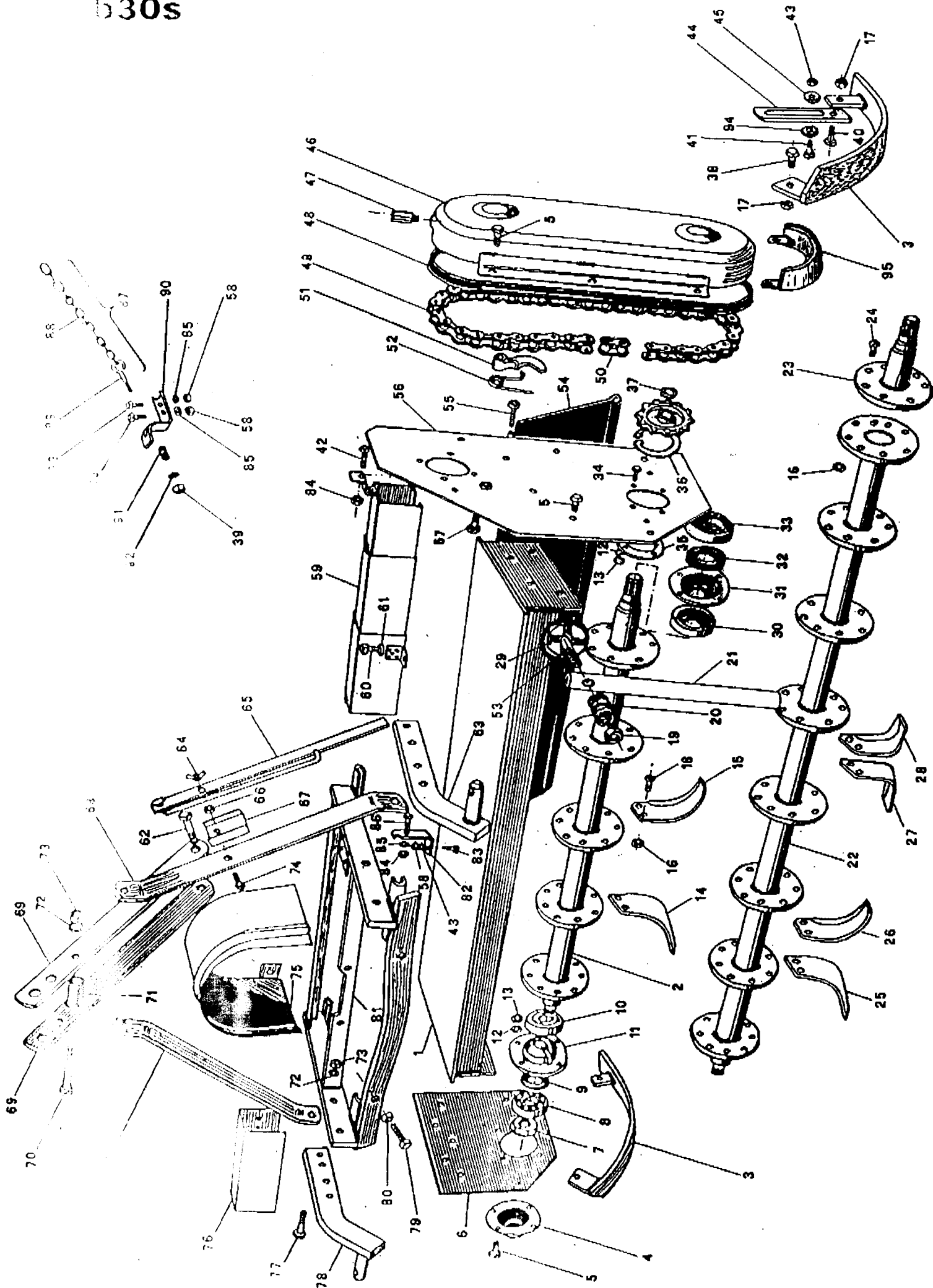
0010073
0030000

27 28

N. 1851 P. 2/8

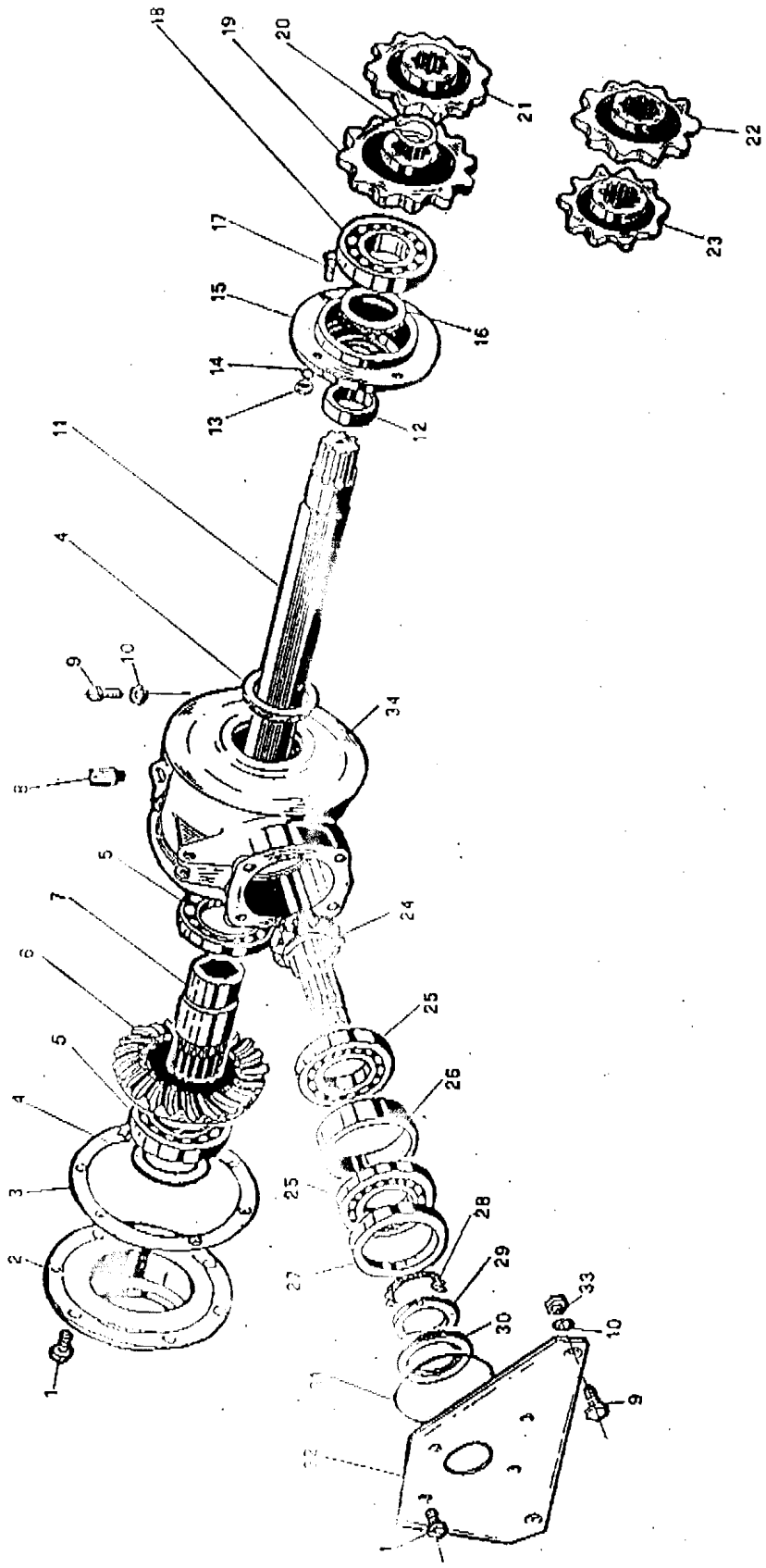
BREVIGLIERI SPA 20. Mar. 2010 15:44

b30s

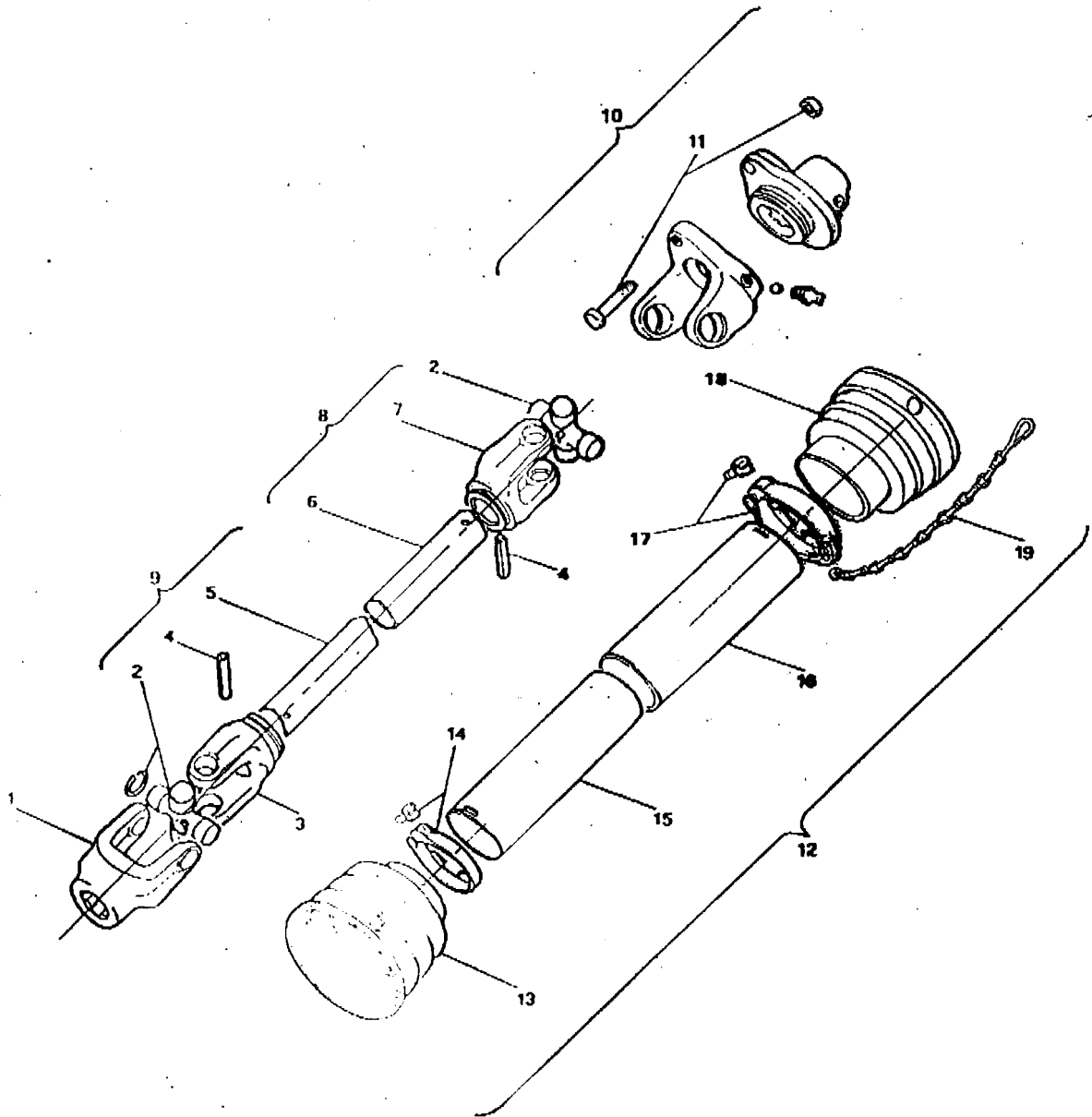


| | | | | | |
|----|-----|------|-----------------------|-----------------------------|---|
| 48 | 003 | 0400 | GUARNIZIONE | GASKET | 1 |
| 49 | 003 | 0146 | CATENA ASA 100x32 | CHAIN ASA 100x32 | 1 |
| 50 | 003 | 0147 | MAGLIA DI GIUNZIONE | CHAIN LINK | 1 |
| 51 | 003 | 0148 | TENDICATENA | CHAIN TENSIONER | 1 |
| 52 | 003 | 0158 | MOLLA TENDICATENA | CHAIN TENSIONER SPRING | 1 |
| 53 | 003 | 6153 | VITE 14 x 70 | BOLT 14 x 70 | 1 |
| 54 | 013 | 0303 | COFANO STRISC. CM. 85 | REAR SHIELD CM. 85 | 1 |
| | 023 | 0303 | COFANO STRISC. CM.105 | REAR SHIELD CM.105 | 1 |
| | 033 | 0303 | COFANO STRISC. CM.125 | REAR SHIELD CM.125 | 1 |
| | 043 | 0303 | COFANO STRISC. CM.145 | REAR SHIELD CM.145 | 1 |
| | 053 | 0303 | COFANO STRISC. CM.165 | REAR SHIELD CM.165 | 1 |
| 55 | 003 | 0309 | VITE 16 x 70 | BOLT 16 x 70 | 2 |
| 56 | 003 | 0028 | FONDO CARTER | LEFT SIDE PANEL | 1 |
| 57 | 003 | 0155 | VITE 10 x 60 | BOLT 10 x 60 | 1 |
| 58 | 000 | 1279 | DADO Ø 10 | NUT Ø 10 | 3 |
| 59 | 012 | 1253 | TELESCOPIO CM.85-105 | COVER-COUNTER SHAFT 85-105 | 1 |
| | 022 | 1253 | TELESCOPIO CM.125-145 | COVER-COUNTER SHAFT 125-145 | 1 |
| | 032 | 1253 | TELESCOPIO CM.165 | COVER-COUNTER SHAFT 165 | 1 |
| 60 | 000 | 6349 | VITE 10 x 20 | BOLT 10 x 20 | 2 |
| 61 | 000 | 2034 | RONDELLA PIANA Ø 10 | WASHER Ø 10 | 2 |
| 62 | 003 | 0285 | VITE 14 x 100 | BOLT 14 x 100 | 1 |
| 63 | 023 | 0411 | PIASTRA CON PERNO SX. | LOWER HITCH PLATE LEFT | 1 |
| 64 | 000 | 1807 | DADO Ø 8 ALETTA | NUT Ø 8 WING | 1 |
| 65 | 003 | 0341 | LEVA DI SPOSTAMENTO | RATCHET ARM | 1 |
| 66 | 000 | 1806 | DADO Ø 8 | NUT Ø 8 | 1 |
| 67 | 003 | 0339 | FERMO PER LEVA | LOCKING COVER | 1 |
| 68 | 003 | 0293 | LAMA VERTICALE | TOP HITCH SUPPORT | 2 |
| 69 | 003 | 0286 | LAMA INCLINATA | TOP HITCH ARM | 2 |
| 70 | 009 | 0226 | VITE 14 x 110 | BOLT 14 x 110 | 2 |
| 71 | 000 | 1254 | DISTANZIALE | SPACER | 1 |
| 72 | 000 | 1020 | GROWER Ø 14 | WASHER Ø 14 | 6 |
| 73 | 000 | 1019 | DADO Ø 14 | NUT Ø 14 | 6 |
| 74 | 000 | 8037 | VITE 8 x 50 | BOLT 8 x 50 | 1 |
| 75 | 003 | 4355 | PROTEZIONE METALLICA | PROTECTIVE COVER | 1 |
| 76 | 013 | 0260 | PROTEZIONE DX.85-105 | RIGHT PROTECTION 85-105 | 1 |
| | 023 | 0260 | PROTEZIONE DX.125 | RIGHT PROTECTION 125 | 1 |
| | 033 | 0260 | PROTEZIONE DX.145 | RIGHT PROTECTION 145 | 1 |
| | 043 | 0260 | PROTEZIONE DX.165 | RIGHT PROTECTION 165 | 1 |
| 77 | 009 | 1128 | VITE 14 x 65 | BOLT 14 x 65 | 1 |
| 78 | 013 | 0411 | PIASTRA CON PERNO DX. | LOWER HITCH PLATE RIGHT | 1 |
| 79 | 003 | 0269 | VITE 14 x 65 | BOLT 14 x 65 | 1 |
| 80 | 000 | 1177 | DADO Ø 14 | NUT Ø 14 | 1 |
| 81 | 003 | 0251 | ATTACCO SPOSTABILE | SIDE SHIFT COMPLETE | 1 |
| 82 | 003 | 0321 | ATTACCO PER CATENA | CHAIN HITCH | 1 |
| 83 | 003 | 0334 | VITE 10 x 55 | BOLT 10 x 55 | 1 |
| 84 | 001 | 4106 | DADO Ø 10 AUTOBLOC. | NUT-SELF LOCKING Ø 10 | 1 |
| 85 | 003 | 0157 | RONDELLA PIANA | WASHER | 1 |
| 86 | 000 | 1278 | VITE 10 x 30 | BOLT 10 x 30 | 1 |
| 87 | 002 | 1301 | CATENA COMPLETA | CHAIN COMPLETE | 1 |
| 88 | 000 | 7257 | CATENA | CHAIN | 1 |
| 89 | 002 | 1303 | GANCIO | LIFTING HOOK | 1 |
| 90 | 003 | 0317 | ATTACCO PER CATENA | CHAIN HITCH | 1 |
| 91 | 002 | 1315 | MOLLA | SPRING | 1 |
| 92 | 000 | 2265 | RONDELLA PIANA Ø 12 | WASHER Ø 12 | 1 |
| 93 | 003 | 3176 | VITE 10 x 25 | BOLT 10 x 25 | 2 |
| 94 | 003 | 0066 | RONDELLA FILETTATA | WASHER WITH THREAD | 2 |
| 95 | 000 | 1851 | SLITTA SALVACARTER | CHAIN PAN PROTECTION | 1 |

4/8 P.



| REF. | CODE | DESCRIZIONE | DESCRIPTION |
|------|----------|------------------------|------------------------|
| 1 | 000 1046 | VITE 10 x 20 | BOLT 10 x 20 |
| 2 | 003 0191 | COPERCHIELLA SCATOLA | GEAR COVER |
| 3 | 003 0193 | GUARNIZIONE | GASKET |
| 4 | 000 1084 | PARAOLIO 55.72.10 | SEAL-OIL 55.72.10 |
| 5 | 003 0188 | CUSCINETTO 6011 | BEARING 6011 |
| 6 | 003 0196 | CORONA CONICA | BEVEL GEAR |
| 7 | 003 0190 | MOZZO CORONA | SHAFT COUPLING |
| 8 | 000 1107 | SFIATATOIO SCATOLA | BREATHER CAP |
| 9 | 000 2437 | VITE 14 x 40 | BOLT 14 x 40 |
| 10 | 000 1104 | GROWER Ø 14 | WASHER Ø 14 |
| 11 | 013 0180 | ALBERO ESAGONALE 85 | HEXAGONAL SHAFT CM. 85 |
| | 023 0180 | ALBERO ESAGONALE 105 | HEXAGONAL SHAFT CM.105 |
| | 033 0180 | ALBERO ESAGONALE 125 | HEXAGONAL SHAFT CM.125 |
| | 043 0180 | ALBERO ESAGONALE 145 | HEXAGONAL SHAFT CM.145 |
| | 053 0180 | ALBERO ESAGONALE 165 | HEXAGONAL SHAFT CM.165 |
| 12 | 001 3044 | DISTANZIALE | SPACER |
| 13 | 000 1010 | DADO Ø 10 | NUT Ø 10 |
| 14 | 000 1011 | GROWER Ø 10 | WASHER Ø 10 |
| 15 | 003 0162 | SUPPORTO LATO CARTER | TOP SHAFT FLANGE |
| 16 | 000 1155 | PARAOLIO 50.80.10 | SEAL-OIL 50.80.10 |
| 17 | 000 1008 | VITE 10 x 30 | BOLT 10 x 30 |
| 18 | 000 1148 | CUSCINETTO 6308 | BEARING 6308 |
| 19 | 003 0143 | RUOTA DENTATA Z.10 | SPROCKET Z.10 |
| 20 | 000 8138 | SEEGER Ø 40 ESTERNO | SNAP RING Ø 40 EX. |
| 21 | 000 1112 | RUOTA DENTATA Z.11 | SPROCKET Z.11 |
| 22 | 000 1111 | RUOTA DENTATA Z.12 | SPROCKET Z.12 |
| 23 | 000 1113 | RUOTA DENTATA Z.13 | SPROCKET Z.13 |
| 24 | 003 0197 | PIGNONE CONICO | PINION GEAR |
| 25 | 003 0201 | CUSCINETTO 30208 | BEARING 30208 |
| 26 | 003 0203 | DISTANZIALE POSTERIORE | SPACER-REAR |
| 27 | 003 0204 | DISTANZIALE ANTERIORE | SPACER-FRONT |
| 28 | 000 7827 | ROSETTA MB 8 | WASHER-TOOTH LOCK MB 8 |
| 29 | 000 7826 | GHIERA KM 8 | NUT LOCKING KM 8 |
| 30 | 003 0211 | PARAOLIO 35.72.10 | SEAL-OIL 35.72.10 |
| 31 | 003 0213 | OR 805 | OIL-RING 805 |
| 32 | 003 0218 | LAMIERA ANTERIORE | METAL-COVER |
| 33 | 000 1226 | DADO Ø 14 | NUT Ø 14 |
| 34 | 003 0184 | SCATOLA INGRANAGGI | GEARBOX |



| REF. | CODE | DESCRIZIONE | DESCRIPTION | N. |
|------|----------|-----------------------|-----------------------------|----|
| 1 | 003 0477 | FORCELLA CON PULSANTE | YOKE TRACTOR END | 1 |
| 2 | 003 0478 | CROCIERA | CROSS & BEARING | 2 |
| 3 | 003 0472 | FORCELLA MASCHIO | YOKE INNER TUBE | 1 |
| 4 | 000 7069 | SPINA ELASTICA 8x60 | ROLL PIN 8x60 | 2 |
| 5 | 004 2323 | TUBO MASCHIO | INNER TUBE | 1 |
| 6 | 004 2315 | TUBO FEMMINA | OUTER TUBE | 1 |
| 7 | 003 0464 | FORCELLA FEMMINA | YOKE OUTER TUBE | 1 |
| 8 | 004 2312 | ALBERO FEMMINA COMPL. | SHAFT-FEMALE COMPLETE | 1 |
| 9 | 004 2321 | ALBERO MASCHIO COMPL. | SHAFT-MALE COMPLETE | 1 |
| 10 | 002 2241 | LIMITATORE DI COPPIA | YOKE-IMPLIMENT END COMPLETE | 1 |
| 11 | 002 2243 | BULLONE DI TRANCIO | SHEARING BOLT | 1 |
| 12 | 004 2304 | PROTEZIONE COMPLETA | SHIELD COMPLETE | 1 |
| 13 | 003 0228 | CUFFIA INTERNA | GUARD-CONE INNER | 1 |
| 14 | 003 0229 | ANELLO INTERNO | LOCKING COLLAR INNER | 1 |
| 15 | 004 2310 | TUBO PROTEZ. INTERNA | TUBE SHIELD MALE | 1 |
| 16 | 004 2307 | TUBO PROTEZ. ESTERNA | TUBE SHIELD FEMALE | 1 |
| 17 | 003 0225 | ANELLO ESTERNO | LOCKING COLLAR OUTER | 1 |
| 18 | 003 0224 | CUFFIA ESTERNA | GUARD-CONE OUTER | 1 |
| 19 | 004 1176 | CATENELLA | SAFETY CHAIN | 1 |